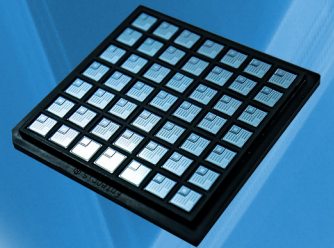
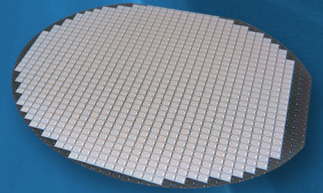
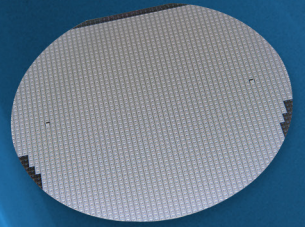




Bare Die Product Guide



Rethink the Possibilities™
Discretes do Matter™



The majority of Central's wafers are produced in TS16949 certified facilities.

Bare Die Product Guide

This product guide provides designers an overview at the specific devices Central Semiconductor has available in bare die form and the capabilities for custom solutions. The guide is organized by device type and includes small signal transistors, MOSFETs, bipolar power transistors, diodes, protection devices, rectifiers and thyristors. When you need a standard device or a custom solution to solve your needs, think Central.

Table of Contents

Standard Bare Die Devices & Facilities

Page 4

Up-Screened Devices & Custom Services

Page 5

Part Numbering

Page 6

Online Product Portfolio

Page 8

Requesting a Quote

Page 9

Product Guide

Page 10

Gross Die Per Wafer by Process Type

Page 25

Additional Databooks and Literature

Page 27

Quality Policy

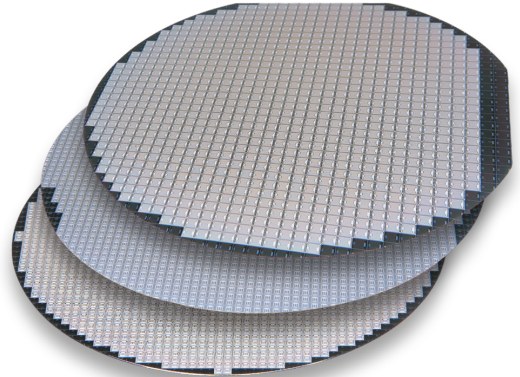
**Back
Cover**

Standard bare die devices

A Legacy of Innovation

Central Semiconductor Corp. has been in the business of manufacturing discrete semiconductors since 1974.

In 1996, Central entered the hybrid market to fill the void left after the departure of several manufacturers from the bare die market. This guide features Central's standard processes available in bare die. Full wafer or chip tray packing options are available.

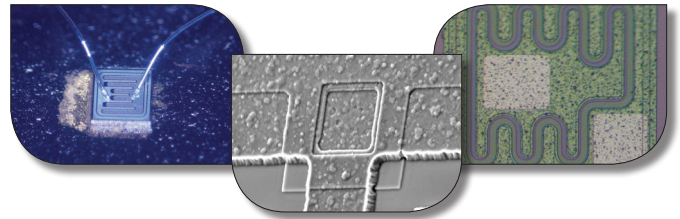


Bare die devices:

- Diodes
- Rectifiers
- Transistors
- TVS Diodes & ESD Protection Diodes
- MOSFETs/JFETs
- Thyristors

Devices available in:

- Fully probed wafers (rejects inked)
- Waffle tray packs (100% accepted die)
- Full wafer sawn on plastic ring (rejects inked)



Processes & facilities

- 100% of die is probed and rejects are inked
- All die are inspected in accordance to MIL-STD-750 Method 2073
- Probing performed in Central's Class 1000 clean room
- Majority of Central's die inventory is held in the U.S. at Hauppauge, NY facility

100% tested and screened in Central's Class 1000 clean room



Custom services & solutions



Your vision is our mission. Central excels at listening to customers' challenges and designing custom solutions that other manufacturers have no interest in pursuing. **Just ask.**

Solutions include the following:

- Electrical parameter screening
- Custom wafer diffusion and metallization
- Standard/customer-specific testing and up-screening

Up-screening capabilities

Central has the capability to perform up-screen testing in-house for high reliability applications.

MIL-PRF 38534

- Class H and K equivalents

MIL-PRF 19500

- Class HC and KC equivalents

Customer-specific up-screening

- Customer SCDs are reviewed and all requirements confirmed

Testing capabilities:

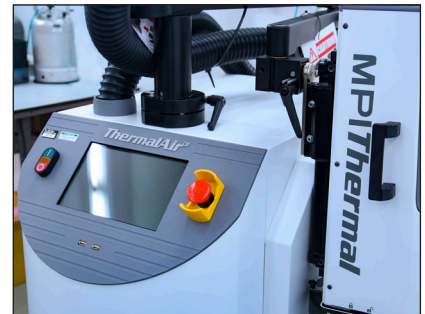
All tests performed to MIL-STD-750 or MIL-STD-883 (bare die) test methods.

Typical bare die up-screening process:

MIL-PRF-38534 Evaluation Elements						
Sub Group	Class		Test	MIL-STD-883		Acceptance Quantity
	K	H		Method	Conditions	
1	X	X	Element electrical			100%
2	X	X	Visual inspection	2010 1/2069 1/2070 1/2072 1/2073		100%
3	X	X	Internal visual	2010 1/2069 1/2070 1/2072 1/2073		10 (0)
4	X		Temperature Cycling	1010	C	2/ 10 (0)
	X		Constant acceleration or mechanical shock	2002 - 2001	B, Y1 direction 3,000 g's, Y1 direction	
	X		Internal electrical			
	X		Burn in	1015	240 hours minimum at +125°C	
	X		Post burn in electrical			
	X		Steady state life	1005		
	X	X	Final electrical			
5	X	X	Wire bond evaluation	2011		10 (0) wires or 20 (1) wires
6	X		SEM	2018 1/2077		See method 2018 of MIL-STD-883 or method 2077 of MIL-STD-750

1/ MIL-STD-750 methods.

2/ For Class K sample sizes, see MIL-PRF-38534 Section C.3.3.4.1.



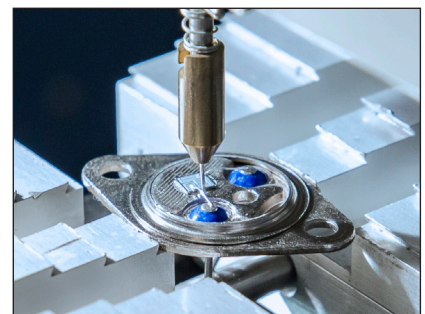
Thermal cycle testing



Temperature cycle chambers



Scanning Electron Microscopy (S.E.M.)



Wire pull testing

Standard part numbering

Standard devices

Die part numbers are derivative of the die process number, principal device part number, and packing method. For further information on die part numbering, visit Central's bare die webpage.

www.centrasemi.com/baredie

Example:

Small Signal NPN high voltage transistor die, 2N3439, in a chip tray (Waffle) Package.

CP310 - 2N3439 - CT

CENTRAL PROCESS NUMBER
(5 - 7 ALPHA/NUMERIC)

- CPxxx = Transistor
- CPZxx = Zener Diode
- CPDxx = Diode
- CPQxx = TRIAC
- CPSxx = SCR

DEVICE TYPE NUMBER
(10 ALPHA/NUMERIC MAX)

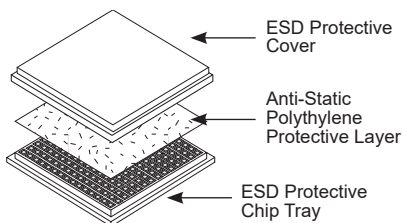
PACKING METHOD

See below for illustrations of each packing method.

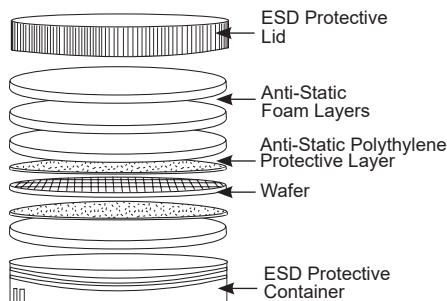
- CM** = Singulated bare die, 100% electrically tested, 100% visually inspected, reject die removed, tray (waffle) package
 - CT** = Singulated bare die, 100% electrically tested, reject die removed, tray (waffle) package
 - WN** = Wafer form, 100% electrically tested, reject die inked
 - WR** = Wafer form, 100% electrically tested, sawn and mounted on adhesive membrane and plastic ring, reject die inked
 - WS*** = Wafer form, 100% electrically tested, sawn and mounted on adhesive membrane and metal frame, reject die inked
- *WS is by special order only. Please contact your local Central sales representative.

Packing methods

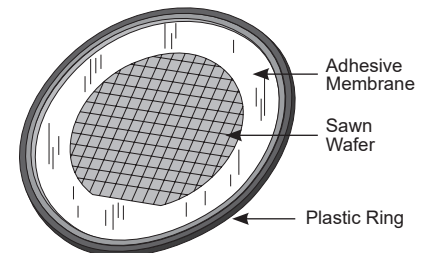
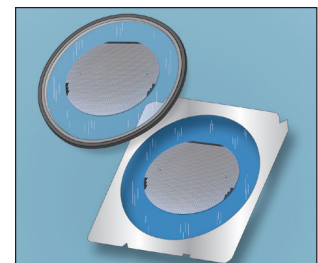
Waffle pack (CM, CT)



Full unsawn wafers (WN)



Sawn wafer on plastic ring (WR) or metal frame* (WS)



Custom & up-screened part numbering

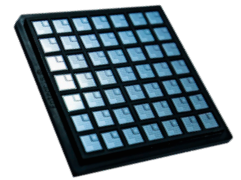
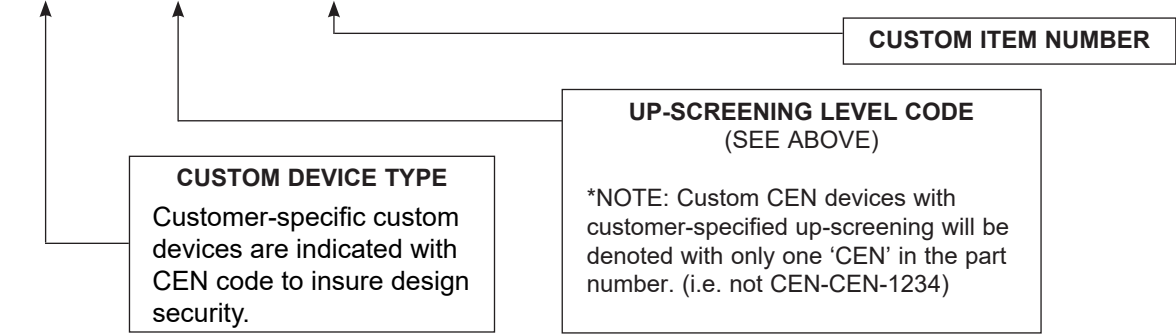
Custom devices

Part numbering for up-screened bare die devices follow the same convention as standard part numbers (see pg. 6), with the addition of one or two character codes to indicate the level of screening.

Example:

Custom device up-screened to MIL-PRF-19500 equivalent or customer defined test specifications.

CEN - KC - 1234



*NOTE: Custom CEN devices with customer-specified up-screening will be denoted with only one 'CEN' in the part number. (i.e. not CEN-CEN-1234)

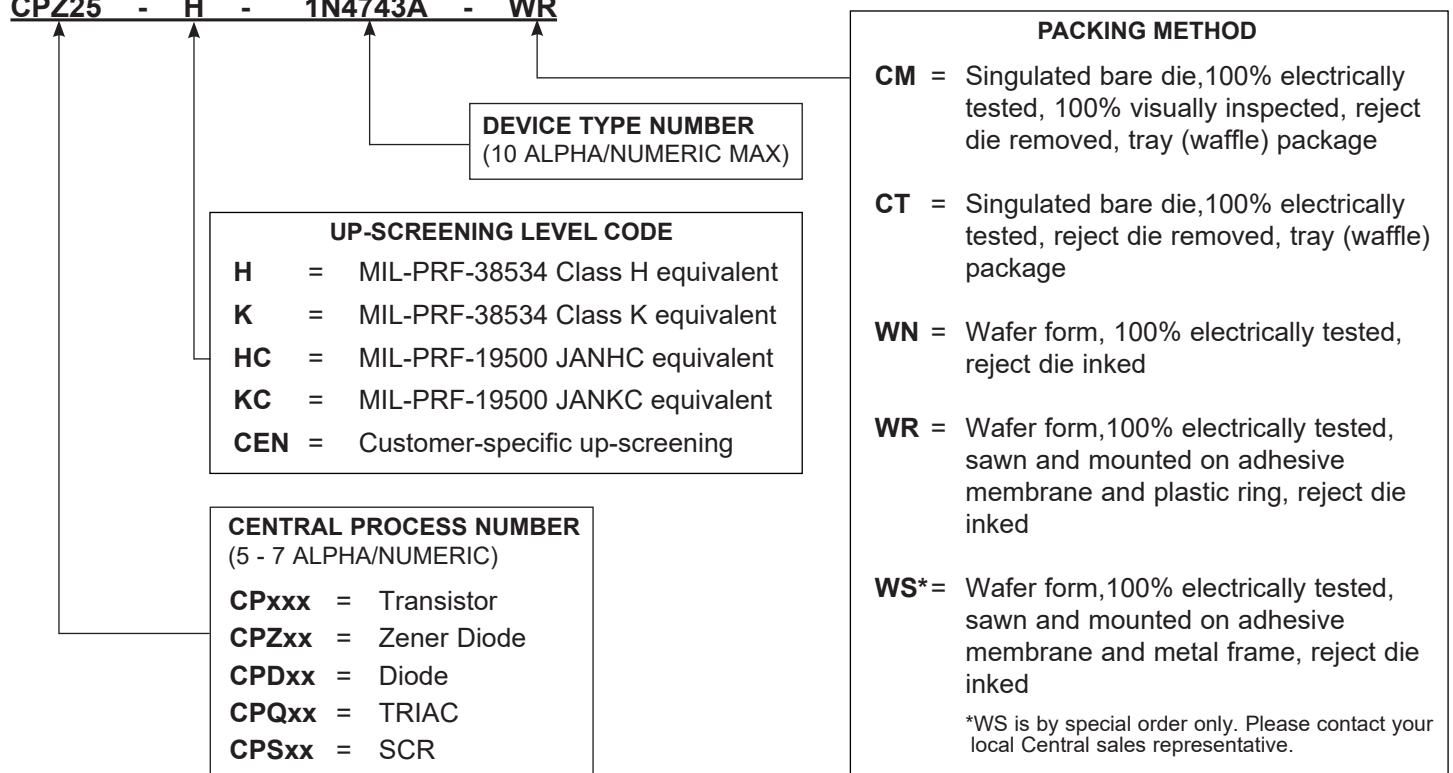
Up-screened devices

Part numbering for up-screened bare die devices follows the same convention as standard part numbers (see pg. 6), with the addition of one or two character codes to indicate the level of screening.

Example:

Zener diode die, up-screened to MIL-PRF-38534 Class H equivalent, 1N4743A, in wafer form on adhesive membrane with plastic ring.

CPZ25 - H - 1N4743A - WR



How to request a quote

To request a quote, contact your local Central Sales representative or call 631.435.1110.

Attention to every detail is Central's highest concern. We are committed to exceeding your expectations and earning your business on every requirement.

Questions?

Just Ask

Challenges welcome



Central[™]
Semiconductor Corp.

Vision Statement

We aspire to be the preferred manufacturer of the most innovative discrete semiconductors in the industry

The graphic features a blue globe on the left with white grid lines. To the right, the text is set against a dark blue background with a subtle circuit pattern. Below the text, several discrete semiconductor components are shown, including a small square chip, a larger square chip, a gold-plated component with three leads, and two black rectangular components, all with the 'Central' logo.

Product Guide Contents

Diodes & Rectifiers	11
Rectifiers	
Schottky Diodes & Rectifiers	
Switching Diodes	
Zener Diodes	
Transistors	17
General Purpose	
RF Oscillator	
Darlington	
Low Vce(Sat)	
MOSFETs/JFETs	22
MOSFETs	
JFETs	
Protection Devices	23
ESD Diodes & Arrays	
Thyristors	24
Programmable UJT	
SCR	
Triac	

Visit Central's parametric search for a complete listing of all bare die device specifications.
www.centrasemi.com/parametric



Rectifiers



S Indicates sorted columns
* Consult datasheet on web

Central Part Number	^S V _{RRM} MAX	I _O MAX	V _F MAX	t _{RR} MAX	Die Size (MILS)	Die Thickness (MILS)	Top Metallization (Å)	Bottom Metallization (Å)
CPD16-CMR1U-01M	100V	1A	1V	35ns	50 X 50	12.5	Ni/AU (2500/1000)	Ni/AU (2500/1000)
CPD24-1N4934	100V	1A	1.2V	200ns	50.5 X 50.5	11	Ni/AU (4500/1000)	Ni/AU (5000/1000)
CPD69-CMR1-02M	200V	1A	1.1V	N/A*	41 X 41	11	Ni/AU (4500/1000)	Ni/AU (5000/1000)
CPD69-1N5614	200V	1A	1.2V	2us	41 X 41	11	Ni/AU (4500/1000)	Ni/AU (5000/1000)
CPD24-1N5615	200V	1A	1.2V	150ns	50.5 X 50.5	11	Ni/AU (4500/1000)	Ni/AU (5000/1000)
CPD24-1N4942	200V	1A	1.3V	150ns	50.5 X 50.5	11	Ni/AU (4500/1000)	Ni/AU (5000/1000)
CPD06-1N5550	200V	3A	1V	2us	88.55 X 88.55	10.2	Ni/AU (4500/1000)	Ni/AU (5000/1000)
CPD69-1N4004	400V	1A	1.1V	N/A*	41 X 41	11	Ni/AU (4500/1000)	Ni/AU (5000/1000)
CPD69-1N4246	400V	1A	1.2V	5us	41 X 41	11	Ni/AU (4500/1000)	Ni/AU (5000/1000)
CPD16-CMR1U-04M	400V	1A	1.25V	50ns	50 X 50	12.5	Ni/AU (2500/1000)	Ni/AU (2500/1000)
CPD24-CMR1F-04M	400V	1A	1.3V	150ns	50.5 X 50.5	11	Ni/AU (4500/1000)	Ni/AU (5000/1000)
CPD24-1N4944	400V	1A	1.3V	150ns	50.5 X 50.5	11	Ni/AU (4500/1000)	Ni/AU (5000/1000)
CPD69-CMR1-08M	400V	2A	1.2V	N/A*	41 X 41	11	Ni/AU (4500/1000)	Ni/AU (5000/1000)
CPD17-CMR3U-04	400V	3A	1.25V	50ns	88 X 88	14	Ni/AU (4500/1000)	Ni/AU (5000/1000)
CPD07-CR6A4GPP	400V	6A	1V	N/A*	100 X 100	8.7	Ni/AU (4500/1000)	Ni/AU (5000/1000)
CPD26-CR6AF4GPP	400V	6A	1.3V	200ns	99 X 99	11	Ni/AU (4500/1000)	Ni/AU (5000/1000)
CPD18-CUDD8-04	400V	8A	1.3V	25ns	98 X 98	12.5	Ni/AU (2500/1000)	Ni/AU (3000/1000)
CPD04-CBRHD-06	600V	500mA	1V	5uA	26 X 26	10.5	Ni/AU (4500/1000)	Ni/AU (5000/1000)
CPD69-CMR1-06	600V	1A	1.1V	N/A*	41 X 41	11	Ni/AU (4500/1000)	Ni/AU (5000/1000)
CPD69-CMR1-06M	600V	1A	1.1V	N/A*	41 X 41	11	Ni/AU (4500/1000)	Ni/AU (5000/1000)
CPD24-CMR1F-06M	600V	1A	1.3V	250ns	50.5 X 50.5	11	Ni/AU (4500/1000)	Ni/AU (5000/1000)
CPD24-CMR1F-08M	600V	1A	1.3V	250ns	50.5 X 50.5	11	Ni/AU (4500/1000)	Ni/AU (5000/1000)
CPD24-CMR1F06M	600V	1A	1.3V	250ns	50.5 X 50.5	11	Ni/AU (4500/1000)	Ni/AU (5000/1000)
CPD24-1N4946	600V	1A	1.3V	250ns	50.5 X 50.5	11	Ni/AU (4500/1000)	Ni/AU (5000/1000)
CPD16-CMR1U-06M	600V	1A	1.4V	75ns	50 X 50	12.5	Ni/AU (2500/1000)	Ni/AU (2500/1000)
CPD16-CMR1U06M	600V	1A	1.4V	75ns	50 X 50	12.5	Ni/AU (2500/1000)	Ni/AU (2500/1000)
CPD16-CR1U04M	600V	1A	1.4V	75ns	50 X 50	12.5	Ni/AU (2500/1000)	Ni/AU (2500/1000)
CPD06-CMR3-06	600V	3A	1.2V	N/A*	88.55 X 88.55	10.2	Ni/AU (4500/1000)	Ni/AU (5000/1000)
CPD06-1N5400	600V	3A	1.2V	N/A*	88.55 X 88.55	10.2	Ni/AU (4500/1000)	Ni/AU (5000/1000)
CPD20-CMR5H-06	600V	5A	1.7V	22ns	78.7 X 78.7	10.2	AL/TI/Ni/AU (10000/1500/1500/500)	AL/TI/Ni/AU (10000/1500/1500/500)
CPD07-CR6A6GPP	600V	6A	1V	N/A*	100 X 100	8.7	Ni/AU (4500/1000)	Ni/AU (5000/1000)
CPD26-CR6AF6GPP	600V	6A	1.3V	250ns	99 X 99	11	Ni/AU (4500/1000)	Ni/AU (5000/1000)
CPD19-CHD8-06	600V	8A	2.2V	25ns	87 X 87	10.2	AL/TI/Ni/AU (10000/1500/1500/500)	AL/TI/Ni/AU (10000/1500/1500/500)
CPD21-CTLHR10-06	600V	10A	1.7V	25ns	110 X 110	10.2	AL/TI/Ni/AU (10000/1500/1500/500)	AL/TI/Ni/AU (10000/1500/1500/500)
CPD69-1N3614	800V	1A	1.1V	2us	41 X 41	11	Ni/AU (4500/1000)	Ni/AU (5000/1000)
CPD22-1N5620	800V	1A	1.2V	2us	50 X 50	10.24	Ni/AU (1000/5000)	Ni/AU (1000/5000)
CPD69-1N4007	1000V	1A	1.1V	N/A*	41 X 41	11	Ni/AU (4500/1000)	Ni/AU (5000/1000)
CPD22-1N5622	1000V	1A	1.2V	2us	50 X 50	10.24	Ni/AU (1000/5000)	Ni/AU (1000/5000)
CPD24-CMR1F-10M	1000V	1A	1.3V	500ns	50.5 X 50.5	11	Ni/AU (4500/1000)	Ni/AU (5000/1000)
CPD06-1N5554	1000V	3A	1.1V	4us	88.55 X 88.55	10.2	Ni/AU (4500/1000)	Ni/AU (5000/1000)
CPD06-1N5408	1000V	3A	1.2V	N/A*	88.55 X 88.55	10.2	Ni/AU (4500/1000)	Ni/AU (5000/1000)

Schottky Diodes & Rectifiers



S Indicates sorted columns
* Consult datasheet on web

Central Part Number	S V _{RRM} MAX	I _O MAX	V _F MAX	I _R MAX	Die Size (MILS)	Die Thickness (MILS)	Top Metallization	Bottom Metallization
CPD112R-SH05-20L	20V	500mA	180mV	30uA	15 X 15	3.93	AL (20000)	TI/NI/AG (1000/3000/10000)
CPD76X-1N5817	20V	1A	320mV	1mA	32.28 X 32.28	5.9	AL (20000)	AU (9000)
CPD77X-1N5820	20V	3A	475mV	2mA	60.63 X 60.63	5.9	TI/AG (2500/30000)	TI/NI/AU (1600/5550/1500)
CPD48V-CMP5H-3	30V	100mA	330mV	500nA	13.777 X 13.777	7.09	AL/MO (30000)	AU (9000)
CPD104R-CFSH2-3L	30V	200mA	190mV	10uA	14.567 X 14.567	3.9	AL (30000)	AU (9000)
CPD82X-CMD5H2-3	30V	200mA	550mV	50uA	14.567 X 14.567	5.5	AL (20000)	AU (9000)
CPD76X-1N5818	30V	1A	330mV	1mA	32.28 X 32.28	5.9	AL (20000)	AU (9000)
CPD77X-CTLSH3-30	30V	3A	300mV	1mA	60.63 X 60.63	5.9	TI/AG (2500/30000)	TI/NI/AU (1600/5550/1500)
CPD87R-CFSH2-4L	40V	200mA	450mV	1uA	14.567 X 14.567	3.9	AL (30000)	AU (9000)
CPD94X-CMLSH05-4	40V	500mA	130mV	20uA	20.079 X 20.079	5.9	AL (20000)	AU (9000)
CPD85V-CMP5H1-4L	40V	1A	270mV	900uA	39.4 X 39.4	7.09	AL (30000)	AU (9000)
CPD76X-CMLSH1-40	40V	1A	290mV	10uA	32.28 X 32.28	5.9	AL (20000)	AU (9000)
CPD76X-1N5819	40V	1A	340mV	1mA	32.28 X 32.28	5.9	AL (20000)	AU (9000)
CPD76X-CXSH-4	40V	1A	550mV	1mA	32.28 X 32.28	5.9	AL (20000)	AU (9000)
CPD79-CTLSH2-40	40V	2A	450mV	0.2mA	49.213 X 49.213	9.84	AL/NI/AU (30000/3000/1500)	TI/NI/AU (1600/5500/1600)
CPD08-CMSH5-40FL	40V	5A	460mV	100uA	84 X 84	9.8	TI/NI/AG (1000/1000/18000)	TI/NI/AG (1000/1000/8000)
CPD81R-CZSH5-40	40V	5A	550mV	3mA	72.44 X 72.44	3.9	AL (30000)	AU (9000)
CPD81X-CZSH5-40	40V	5A	550mV	3mA	72.44 X 72.44	5.91	AL (30000)	AU (9000)
CPD81X-CRSH5-4	40V	5A	570mV	10mA	72.44 X 72.44	5.91	AL (30000)	AU (9000)
CPD98V-CMUSH2-4	40V	N/A*	260mV	500nA	11.024 X 11.024	7.09	AL (30000)	AU (9000)
CPD102X-CMPD6263	70V	15mA	410mV	200nA	9.06 X 9.06	5.91	AL (30000)	AU (9000)
CPD102X-1N5711	70V	N/A*	410mV	200nA	9.06 X 9.06	5.91	AL (30000)	AU (9000)
CPD40-CTLSH5-100	100V	5A	800mV	15uA	68 X 68	11.8	TI/NI/AG (1000/1000/18000)	TI/NI/AG (1000/1000/6000)
CPD107-CZSH6-100	100V	6A	700mV	10uA	56 X 56	11.8	AL (30000)	AG (20000)

Switching Diodes



S Indicates sorted columns
* Consult datasheet on web

Central Part Number	S V _{RRM} MAX	I _O MAX	V _F MAX	I _R MAX	Die Size (MILS)	Die Thickness (MILS)	Top Metallization (Å)	Bottom Metallization (Å)
CPD65-BAV45	35V	50mA	1V	5pA	11.8 X 11.8	8	AL (15000)	AU (18000)
CPD93V-1N3600	50V	200mA	620mV	100nA	12.795 X 12.795	7.09	AL (30000)	AU-AS (10000)
CPD93V-1N4150	50V	200mA	620mV	100nA	12.795 X 12.795	7.09	AL (30000)	AU-AS (10000)
CPD93V-CMPD4150	50V	250mA	620mV	100nA	12.795 X 12.795	7.09	AL (30000)	AU-AS (10000)
CPD93V-BAS56	60V	200mA	750mV	100nA	12.795 X 12.795	7.09	AL (30000)	AU-AS (10000)
CPD66X-1N457A	70V	200mA	1V	25nA	17.5 X 17.5	5.9	AL (30000)	AU-AS (9000)
CPD83V-1N3064	75V	75mA	575mV	100nA	11.027 X 11.027	7.09	AL (30000)	AU-AS (9000)
CPD83V-1N4454	75V	150mA	1V	100nA	11.027 X 11.027	7.09	AL (30000)	AU-AS (9000)
CPD30V-CMLD2838	75V	200mA	1V	100nA	15.35 X 15.35	7.09	AL (30000)	AU-AS (10000)
CPD89V-CMPD1001	90V	250mA	750mV	100nA	12.795 X 12.795	7.09	AL (30000)	AU-AS (10000)
CPD93V-BAX12	90V	400mA	750mV	100nA	12.795 X 12.795	7.09	AL (30000)	AU-AS (10000)
CPD83V-1N4148	100V	150mA	1V	25nA	11.027 X 11.027	7.09	AL (30000)	AU-AS (9000)
CPD83V-1N914	100V	150mA	1V	25nA	11.027 X 11.027	7.09	AL (30000)	AU-AS (9000)
CPD83V-1N4448	100V	150mA	720mV	25nA	11.027 X 11.027	7.09	AL (30000)	AU-AS (9000)
CPD83V-BAS16	100V	250mA	1V	25nA	11.027 X 11.027	7.09	AL (30000)	AU-AS (9000)
CPD83V-CMPD914	100V	250mA	1V	25nA	11.027 X 11.027	7.09	AL (30000)	AU-AS (9000)
CPD83V-1N914A	100V	250mA	1V	25nA	11.027 X 11.027	7.09	AL (30000)	AU-AS (9000)
CPD91V-CD6001	100V	250mA	850mV	500pA	11.025 X 11.025	7.09	AL (15000)	AU-AS (9000)
CPD91V-CMPD6001	100V	250mA	850mV	500pA	11.025 X 11.025	7.09	AL (15000)	AU-AS (9000)
CPD89V-CMPD5001	120V	400mA	750mV	100nA	12.795 X 12.795	7.09	AL (30000)	AU-AS (10000)
CPD66X-1N3595	150V	150mA	690mV	1nA	17.5 X 17.5	5.9	AL (30000)	AU-AS (9000)
CPD80V-1N3070	175V	200mA	1V	100nA	16.1 X 16.1	7.09	AL (15000)	AU-AS (9000)
CPD80V-1N3070	175V	200mA	1V	100nA	16.1 X 16.1	7.09	AL (30000)	AU-AS (9000)
CPD66X-CMHD459A	200V	200mA	1V	25nA	17.5 X 17.5	5.9	AL (30000)	AU-AS (9000)
CPD66X-1N485B	200V	200mA	1V	25nA	17.5 X 17.5	5.9	AL (30000)	AU-AS (9000)
CPD66X-CMPD3003	200V	200mA	720mV	1nA	17.5 X 17.5	5.9	AL (30000)	AU-AS (9000)
CPD80V-CMPD2003	250V	200mA	1V	100nA	16.1 X 16.1	7.09	AL (15000)	AU-AS (9000)
CPD80V-CMPD2003	250V	200mA	1V	100nA	16.1 X 16.1	7.09	AL (30000)	AU-AS (9000)
CPD80V-CMPD2004	300V	200mA	1V	100nA	16.1 X 16.1	7.09	AL (15000)	AU-AS (9000)
CPD80V-CMPD2004	300V	200mA	1V	100nA	16.1 X 16.1	7.09	AL (30000)	AU-AS (9000)


Zener Diodes



Indicates sorted columns
* Consult datasheet on web

Central Part Number	V _Z MIN	V _Z TYP	V _Z MAX	P _D MAX	Die Size (MILS)	Die Thickness (MILS)	Top Metallization (A)	Bottom Metallization (A)
CPZ18-1N4680	2.09V	2.2V	2.31V	500mW	13.779 X 13.779	7.5	AL (13000)	AU (14000)
CPZ28X-1N4680	2.09V	2.2V	2.31V	500mW	12.99 X 12.99	5.5	AL/TI (13000)	AU-AS (9000)
CPZ28X-BZX55C18	2.85V	3V	3.15V	500mW	12.99 X 12.99	5.5	AL/TI (13000)	AU-AS (9000)
CPZ28X-BZX55C5V1	2.85V	3V	3.15V	500mW	12.99 X 12.99	5.5	AL/TI (13000)	AU-AS (9000)
CPZ28X-BZX55C6V8	2.85V	3V	3.15V	500mW	12.99 X 12.99	5.5	AL/TI (13000)	AU-AS (9000)
CPZ28X-C5236B	2.85V	3V	3.15V	500mW	12.99 X 12.99	5.5	AL/TI (13000)	AU-AS (9000)
CPZ28X-C5238B	2.85V	3V	3.15V	500mW	12.99 X 12.99	5.5	AL/TI (13000)	AU-AS (9000)
CPZ28X-C5241B	2.85V	3V	3.15V	500mW	12.99 X 12.99	5.5	AL/TI (13000)	AU-AS (9000)
CPZ28X-C5242B	2.85V	3V	3.15V	500mW	12.99 X 12.99	5.5	AL/TI (13000)	AU-AS (9000)
CPZ28X-NC39	2.85V	3V	3.15V	500mW	12.99 X 12.99	5.5	AL/TI (13000)	AU-AS (9000)
CPZ28X-5236B	2.85V	3V	3.15V	500mW	12.99 X 12.99	5.5	AL/TI (13000)	AU-AS (9000)
CPZ28X-84B9V1	2.85V	3V	3.15V	500mW	12.99 X 12.99	5.5	AL/TI (13000)	AU-AS (9000)
CPZ18-1N4620	3.135V	3.3V	3.465V	250mW	13.779 X 13.779	7.5	AL (13000)	AU (14000)
CPZ28X-1N4620	3.135V	3.3V	3.465V	250mW	12.99 X 12.99	5.5	AL/TI (13000)	AU-AS (9000)
CPZ18-CMPZ5226B	3.135V	3.3V	3.465V	350mW	13.779 X 13.779	7.5	AL (13000)	AU (14000)
CPZ28X-CMPZ5226B	3.135V	3.3V	3.465V	350mW	12.99 X 12.99	5.5	AL/TI (13000)	AU-AS (9000)
CPZ18-1N5988B	3.135V	3.3V	3.465V	500mW	13.779 X 13.779	7.5	AL (13000)	AU (14000)
CPZ28X-1N5988B	3.135V	3.3V	3.465V	500mW	12.99 X 12.99	5.5	AL/TI (13000)	AU-AS (9000)
CPZ25-1N5913B	3.135V	3.3V	3.465V	1.5W	33.5 X 33.5	7.9	TI/AG (500/30000)	CR/Ni/AG (600/3000/10000)
CPZ18-CMPZ5227B	3.42V	3.6V	3.78V	350mW	13.779 X 13.779	7.5	AL (13000)	AU (14000)
CPZ28X-CMPZ5227B	3.42V	3.6V	3.78V	350mW	12.99 X 12.99	5.5	AL/TI (13000)	AU-AS (9000)
CPZ18-1N5227B	3.42V	3.6V	3.78V	500mW	13.779 X 13.779	7.5	AL (13000)	AU (14000)
CPZ28X-1N5227B	3.42V	3.6V	3.78V	500mW	12.99 X 12.99	5.5	AL/TI (13000)	AU-AS (9000)
CPZ28X-1N4622	3.705V	3.9V	4.095V	250mW	12.99 X 12.99	5.5	AL/TI (13000)	AU-AS (9000)
CPZ18-CMPZ5228B	3.705V	3.9V	4.095V	350mW	13.779 X 13.779	7.5	AL (13000)	AU (14000)
CPZ28X-CMPZ5228B	3.705V	3.9V	4.095V	350mW	12.99 X 12.99	5.5	AL/TI (13000)	AU-AS (9000)
CPZ18-1N5228B	3.705V	3.9V	4.095V	500mW	13.779 X 13.779	7.5	AL (13000)	AU (14000)
CPZ28X-1N5228B	3.705V	3.9V	4.095V	500mW	12.99 X 12.99	5.5	AL/TI (13000)	AU-AS (9000)
CPZ18-1N4623	4.085V	4.3V	4.515V	250mW	13.779 X 13.779	7.5	AL (13000)	AU (14000)
CPZ28X-1N4623	4.085V	4.3V	4.515V	250mW	12.99 X 12.99	5.5	AL/TI (13000)	AU-AS (9000)
CPZ18-CMPZ5229B	4.085V	4.3V	4.515V	350mW	13.779 X 13.779	7.5	AL (13000)	AU (14000)
CPZ28X-CMPZ5229B	4.085V	4.3V	4.515V	350mW	12.99 X 12.99	5.5	AL/TI (13000)	AU-AS (9000)
CPZ28X-CMPZ5230B	4.465V	4.7V	4.935V	350mW	12.99 X 12.99	5.5	AL/TI (13000)	AU-AS (9000)
CPZ18-1N5230B	4.465V	4.7V	4.935V	500mW	13.779 X 13.779	7.5	AL (13000)	AU (14000)
CPZ28X-1N4688	4.465V	4.7V	4.935V	500mW	12.99 X 12.99	5.5	AL/TI (13000)	AU-AS (9000)
CPZ28X-1N5230B	4.465V	4.7V	4.935V	500mW	12.99 X 12.99	5.5	AL/TI (13000)	AU-AS (9000)
CPZ18-BZX55C5V1	4.845V	5.1V	5.355V	350mW	13.779 X 13.779	7.5	AL (13000)	AU (14000)
CPZ28X-CMPZ5231B	4.845V	5.1V	5.355V	350mW	12.99 X 12.99	5.5	AL/TI (13000)	AU-AS (9000)
CPZ28X-1N5231B	4.845V	5.1V	5.355V	500mW	12.99 X 12.99	5.5	AL/TI (13000)	AU-AS (9000)
CPZ28X-1N751A	4.845V	5.1V	5.355V	500mW	12.99 X 12.99	5.5	AL/TI (13000)	AU-AS (9000)
CPZ25-1N4733A	4.845V	5.1V	5.355V	1W	33.5 X 33.5	7.9	TI/AG (500/30000)	CR/Ni/AG (600/3000/10000)
CPZ25-1N5918B	4.845V	5.1V	5.355V	1.5W	33.5 X 33.5	7.9	TI/AG (500/30000)	CR/Ni/AG (600/3000/10000)
CPZ28X-BZX84C5V6	5.2V	5.6V	6V	350mW	12.99 X 12.99	5.5	AL/TI (13000)	AU-AS (9000)
CPZ28X-1N4626	5.32V	5.6V	5.88V	250mW	12.99 X 12.99	5.5	AL/TI (13000)	AU-AS (9000)

Zener Diodes

 Indicates sorted columns
* Consult datasheet on web

Central Part Number	^S V _Z MIN	V _Z TYP	V _Z MAX	P _D MAX	Die Size (MILS)	Die Thickness (MILS)	Top Metallization (Å)	Bottom Metallization (Å)
CPZ28X-CMPZ4626	5.32V	5.6V	5.88V	350mW	12.99 X 12.99	5.5	AL/TI (13000)	AU-AS (9000)
CPZ28X-1N5524B	5.32V	5.6V	5.88V	400mW	12.99 X 12.99	5.5	AL/TI (13000)	AU-AS (9000)
CPZ18-1N5232B	5.32V	5.6V	5.88V	500mW	13.779 X 13.779	7.5	AL (13000)	AU (14000)
CPZ28X-1N5232B	5.32V	5.6V	5.88V	500mW	12.99 X 12.99	5.5	AL/TI (13000)	AU-AS (9000)
CPZ25-1N4734A	5.32V	5.6V	5.88V	1W	33.5 X 33.5	7.9	TI/AG (500/30000)	CR/Ni/AG (600/3000/10000)
CPZ18-BZX84C6V2	5.8V	6.2V	6.6V	350mW	13.779 X 13.779	7.5	AL (13000)	AU (14000)
CPZ28X-BZX84C6V2	5.8V	6.2V	6.6V	350mW	12.99 X 12.99	5.5	AL/TI (13000)	AU-AS (9000)
CPZ18-1N4627	5.89V	6.2V	6.51V	250mW	13.779 X 13.779	7.5	AL (13000)	AU (14000)
CPZ28X-1N4627	5.89V	6.2V	6.51V	250mW	12.99 X 12.99	5.5	AL/TI (13000)	AU-AS (9000)
CPZ18-CMPZ5234B	5.89V	6.2V	6.51V	350mW	13.779 X 13.779	7.5	AL (13000)	AU (14000)
CPZ28X-CMPZ5234B	5.89V	6.2V	6.51V	350mW	12.99 X 12.99	5.5	AL/TI (13000)	AU-AS (9000)
CPZ18-1N5234B	5.89V	6.2V	6.51V	500mW	13.779 X 13.779	7.5	AL (13000)	AU (14000)
CPZ28X-1N5234B	5.89V	6.2V	6.51V	500mW	12.99 X 12.99	5.5	AL/TI (13000)	AU-AS (9000)
CPZ25-1N4735A	5.89V	6.2V	6.51V	1W	33.5 X 33.5	7.9	TI/AG (500/30000)	CR/Ni/AG (600/3000/10000)
CPZ19-1N4099	6.46V	6.8V	7.14V	250mW	17.716 X 17.716	7.5	AL (13000)	AU (14000)
CPZ28X-1N4099	6.46V	6.8V	7.14V	250mW	12.99 X 12.99	5.5	AL/TI (13000)	AU-AS (9000)
CPZ19-CMPZ5235B	6.46V	6.8V	7.14V	350mW	17.716 X 17.716	7.5	AL (13000)	AU (14000)
CPZ28X-CMPZ5235B	6.46V	6.8V	7.14V	350mW	12.99 X 12.99	5.5	AL/TI (13000)	AU-AS (9000)
CPZ19-1N4692	6.46V	6.8V	7.14V	500mW	17.716 X 17.716	7.5	AL (13000)	AU (14000)
CPZ28X-1N4692	6.46V	6.8V	7.14V	500mW	12.99 X 12.99	5.5	AL/TI (13000)	AU-AS (9000)
CPZ25-1N5921B	6.46V	6.8V	7.14V	1.5W	33.5 X 33.5	7.9	TI/AG (500/30000)	CR/Ni/AG (600/3000/10000)
CPZ28X-1N4100	7.125V	7.5V	7.875V	250mW	12.99 X 12.99	5.5	AL/TI (13000)	AU-AS (9000)
CPZ28X-1N5236B	7.125V	7.5V	7.875V	500mW	12.99 X 12.99	5.5	AL/TI (13000)	AU-AS (9000)
CPZ28X-1N5237B	7.79V	8.2V	8.61V	500mW	12.99 X 12.99	5.5	AL/TI (13000)	AU-AS (9000)
CPZ19-CMPZ5238B	8.265V	8.7V	9.135V	350mW	17.716 X 17.716	7.5	AL (13000)	AU (14000)
CPZ28X-CMPZ5238B	8.265V	8.7V	9.135V	350mW	12.99 X 12.99	5.5	AL/TI (13000)	AU-AS (9000)
CPZ19-1N4103	8.645V	9.1V	9.555V	250mW	17.716 X 17.716	7.5	AL (13000)	AU (14000)
CPZ28X-1N4103	8.645V	9.1V	9.555V	250mW	12.99 X 12.99	5.5	AL/TI (13000)	AU-AS (9000)
CPZ28X-1N5999B	8.645V	9.1V	9.555V	500mW	12.99 X 12.99	5.5	AL/TI (13000)	AU-AS (9000)
CPZ19-1N4104	9.5V	10V	10.5V	250mW	17.716 X 17.716	7.5	AL (13000)	AU (14000)
CPZ28X-1N4104	9.5V	10V	10.5V	250mW	12.99 X 12.99	5.5	AL/TI (13000)	AU-AS (9000)
CPZ19-CMPZ5240B	9.5V	10V	10.5V	350mW	17.716 X 17.716	7.5	AL (13000)	AU (14000)
CPZ28X-CMPZ5240B	9.5V	10V	10.5V	350mW	12.99 X 12.99	5.5	AL/TI (13000)	AU-AS (9000)
CPZ19-1N4697	9.5V	10V	10.5V	500mW	17.716 X 17.716	7.5	AL (13000)	AU (14000)
CPZ19-1N5240B	9.5V	10V	10.5V	500mW	17.716 X 17.716	7.5	AL (13000)	AU (14000)
CPZ19-1N758A	9.5V	10V	10.5V	500mW	17.716 X 17.716	7.5	AL (13000)	AU (14000)
CPZ28X-1N4697	9.5V	10V	10.5V	500mW	12.99 X 12.99	5.5	AL/TI (13000)	AU-AS (9000)
CPZ28X-1N5240B	9.5V	10V	10.5V	500mW	12.99 X 12.99	5.5	AL/TI (13000)	AU-AS (9000)
CPZ28X-1N758A	9.5V	10V	10.5V	500mW	12.99 X 12.99	5.5	AL/TI (13000)	AU-AS (9000)
CPZ25-1N4740A	9.5V	10V	10.5V	1W	33.5 X 33.5	7.9	TI/AG (500/30000)	CR/Ni/AG (600/3000/10000)
CPZ28X-CMPZ5241B	10.45V	11V	11.55V	350mW	12.99 X 12.99	5.5	AL/TI (13000)	AU-AS (9000)
CPZ28X-1N4106	11.4V	12V	12.6V	250mW	12.99 X 12.99	5.5	AL/TI (13000)	AU-AS (9000)
CPZ19-BZX55C6V8	11.4V	12V	12.6V	350mW	17.716 X 17.716	7.5	AL (13000)	AU (14000)
CPZ19-CMPZ5242B	11.4V	12V	12.6V	350mW	17.716 X 17.716	7.5	AL (13000)	AU (14000)

Zener Diodes



S Indicates sorted columns
* Consult datasheet on web

Central Part Number	^S V _Z MIN	V _Z TYP	V _Z MAX	P _D MAX	Die Size (MILS)	Die Thickness (MILS)	Top Metallization (A)	Bottom Metallization (A)
CPZ28X-CMPZ5242B	11.4V	12V	12.6V	350mW	12.99 X 12.99	5.5	AL/TI (13000)	AU-AS (9000)
CPZ19-1N5532B	11.4V	12V	12.6V	400mW	17.716 X 17.716	7.5	AL (13000)	AU (14000)
CPZ28X-1N5532B	11.4V	12V	12.6V	400mW	12.99 X 12.99	5.5	AL/TI (13000)	AU-AS (9000)
CPZ19-1N5242B	11.4V	12V	12.6V	500mW	17.716 X 17.716	7.5	AL (13000)	AU (14000)
CPZ19-1N963B	11.4V	12V	12.6V	500mW	17.716 X 17.716	7.5	AL (13000)	AU (14000)
CPZ28X-1N4699	11.4V	12V	12.6V	500mW	12.99 X 12.99	5.5	AL/TI (13000)	AU-AS (9000)
CPZ28X-1N5242B	11.4V	12V	12.6V	500mW	12.99 X 12.99	5.5	AL/TI (13000)	AU-AS (9000)
CPZ28X-1N963B	11.4V	12V	12.6V	500mW	12.99 X 12.99	5.5	AL/TI (13000)	AU-AS (9000)
CPZ25-1N4743A	12.35V	13V	13.65V	1W	33.5 X 33.5	7.9	TI/AG (500/30000)	CR/NI/AG (600/3000/10000)
CPZ19-1N4109	14.25V	15V	15.75V	250mW	17.716 X 17.716	7.5	AL (13000)	AU (14000)
CPZ28X-1N4109	14.25V	15V	15.75V	250mW	12.99 X 12.99	5.5	AL/TI (13000)	AU-AS (9000)
CPZ19-CMPZ5245B	14.25V	15V	15.75V	350mW	17.716 X 17.716	7.5	AL (13000)	AU (14000)
CPZ28X-CMPZ5245B	14.25V	15V	15.75V	350mW	12.99 X 12.99	5.5	AL/TI (13000)	AU-AS (9000)
CPZ19-1N5245B	14.25V	15V	15.75V	500mW	17.716 X 17.716	7.5	AL (13000)	AU (14000)
CPZ19-1N965B	14.25V	15V	15.75V	500mW	17.716 X 17.716	7.5	AL (13000)	AU (14000)
CPZ28X-1N4702	14.25V	15V	15.75V	500mW	12.99 X 12.99	5.5	AL/TI (13000)	AU-AS (9000)
CPZ28X-1N5245B	14.25V	15V	15.75V	500mW	12.99 X 12.99	5.5	AL/TI (13000)	AU-AS (9000)
CPZ28X-1N965B	14.25V	15V	15.75V	500mW	12.99 X 12.99	5.5	AL/TI (13000)	AU-AS (9000)
CPZ25-1N4744A	14.25V	15V	15.75V	1W	33.5 X 33.5	7.9	TI/AG (500/30000)	CR/NI/AG (600/3000/10000)
CPZ28X-1N4110	15.2V	16V	16.8V	250mW	12.99 X 12.99	5.5	AL/TI (13000)	AU-AS (9000)
CPZ19-1N968B	19V	20V	21V	500mW	17.716 X 17.716	7.5	AL (13000)	AU (14000)
CPZ28X-1N968B	19V	20V	21V	500mW	12.99 X 12.99	5.5	AL/TI (13000)	AU-AS (9000)
CPZ28X-1N5252B	22.8V	24V	25.2V	500mW	12.99 X 12.99	5.5	AL/TI (13000)	AU-AS (9000)
CPZ25-1N5934B	22.8V	24V	25.2V	1.5W	33.5 X 33.5	7.9	TI/AG (500/30000)	CR/NI/AG (600/3000/10000)
CPZ19-CMPZ5254B	25.65V	27V	28.35V	350mW	17.716 X 17.716	7.5	AL (13000)	AU (14000)
CPZ28X-CMPZ5254B	25.65V	27V	28.35V	350mW	12.99 X 12.99	5.5	AL/TI (13000)	AU-AS (9000)
CPZ19-CMPZ5255B	26.6V	28V	29.4V	350mW	17.716 X 17.716	7.5	AL (13000)	AU (14000)
CPZ28X-CMPZ5255B	26.6V	28V	29.4V	350mW	12.99 X 12.99	5.5	AL/TI (13000)	AU-AS (9000)
CPZ19-1N5255B	26.6V	28V	29.4V	500mW	17.716 X 17.716	7.5	AL (13000)	AU (14000)
CPZ28X-1N5256B	28.5V	30V	31.5V	500mW	12.99 X 12.99	5.5	AL/TI (13000)	AU-AS (9000)
CPZ19-BZX84C33	31V	33V	35V	350mW	17.716 X 17.716	7.5	AL (13000)	AU (14000)
CPZ28X-BZX84C33	31V	33V	35V	350mW	12.99 X 12.99	5.5	AL/TI (13000)	AU-AS (9000)
CPZ19-1N5257B	31.35V	33V	34.65V	500mW	17.716 X 17.716	7.5	AL (13000)	AU (14000)
CPZ28X-1N5257B	31.35V	33V	34.65V	500mW	12.99 X 12.99	5.5	AL/TI (13000)	AU-AS (9000)
CPZ25-1N4752A	31.35V	33V	34.65V	1W	33.5 X 33.5	7.9	TI/AG (500/30000)	CR/NI/AG (600/3000/10000)
CPZ25-CMZ5937B	31.35V	33V	34.65V	1.5W	33.5 X 33.5	7.9	TI/AG (500/30000)	CR/NI/AG (600/3000/10000)
CPZ25-1N4753A	34.2V	36V	37.8V	1W	33.5 X 33.5	7.9	TI/AG (500/30000)	CR/NI/AG (600/3000/10000)
CPZ25-1N5938B	34.2V	36V	37.8V	1.5W	33.5 X 33.5	7.9	TI/AG (500/30000)	CR/NI/AG (600/3000/10000)
CPZ28X-1N5259B	37.05V	39V	40.95V	500mW	12.99 X 12.99	5.5	AL/TI (13000)	AU-AS (9000)
CPZ19-CMPZ5260B	40.85V	43V	45.15V	350mW	17.716 X 17.716	7.5	AL (13000)	AU (14000)
CPZ28X-CMPZ5260B	40.85V	43V	45.15V	350mW	12.99 X 12.99	5.5	AL/TI (13000)	AU-AS (9000)
CPZ25-CMZ5940B	40.85V	43V	45.15V	1.5W	33.5 X 33.5	7.9	TI/AG (500/30000)	CR/NI/AG (600/3000/10000)
CPZ28X-1N5261B	44.65V	47V	49.35V	500mW	12.99 X 12.99	5.5	AL/TI (13000)	AU-AS (9000)

General Purpose Transistors



S Indicates sorted columns
* Consult datasheet on web

Central Part Number	S V _{CEO} MIN	I _C MIN	V _{CE(SAT)}	h _{FE} MIN	Die Size (MILS)	Die Thickness (MILS)	Top Metallization (Å)	Bottom Metallization (Å)
CP317X-2N5179	12V	50mA	400mV	25	14.565 X 14.565	5.9	AL-SI (12000)	AU-AS (9000)
CP317X-BFY90	15V	25mA	N/A*	25	14.565 X 14.565	5.9	AL-SI (12000)	AU-AS (9000)
CP317X-2N918	15V	50mA	400mV	20	14.565 X 14.565	5.9	AL-SI (12000)	AU-AS (9000)
CP317X-2N5770	15V	50mA	400mV	50	14.565 X 14.565	5.9	AL-SI (12000)	AU-AS (9000)
CP742X-CM4209	15V	200mA	180mV	50	17.7 X 17.7	5.9	AL (30000)	AU (12000)
CP246-CMPT3646	15V	200mA	300mV	30	13.5 X 13.5	8	AL (13000)	AU (13000)
CP396V-2N2369A	15V	200mA	300mV	40	14.2 X 8.7	7.1	AL (13000)	AU-AS (9000)
CP681-MPSH81	20V	50mA	500mV	60	15 X 15	7.9	AL-SI (13000)	AU (12000)
CP388X-CMKT5089M	25V	50mA	500mV	400	12.99 X 12.99	5.9	AL-SI (17000)	AU (9000)
CP388X-2N5089	25V	50mA	500mV	400	12.99 X 12.99	5.9	AL-SI (17000)	AU (9000)
CP388X-BC109C	25V	200mA	250mV	420	12.99 X 12.99	5.9	AL-SI (17000)	AU (9000)
CP315V-CZT3150	25V	5A	500mV	250	40.15 X 40.15	7.09	AL (30000)	AU (12000)
CP312-CJD200	25V	5A	750mV	45	70.87 X 70.87	9	AL (30000)	TI/NI/AG (1000/500/11300)
CP753V-MJE210	25V	5A	750mV	45	65.748 X 65.748	7.09	AL-SI (30000)	TI/NI/AG (2000/3000/20000)
CP302-MPSH10	25V	N/A*	500mV	60	14.5 X 14.5	9	AL (30000)	AU (18000)
CP188-2N5088	30V	50mA	500mV	300	14.568 X 14.568	9	AL (30000)	AU-AS (18000)
CP388X-2N5088	30V	50mA	500mV	300	12.99 X 12.99	5.9	AL-SI (17000)	AU (9000)
CP588-MPQ3798	40V	50mA	200mV	100	14.57 X 14.57	9	AL (30000)	AU (18000)
CP392V-CMLT3904E	40V	200mA	100mV	100	11.024 X 11.024	7.09	AL (30000)	AU (12000)
CP392V-CMPT3904	40V	200mA	200mV	100	11.024 X 11.024	7.09	AL (30000)	AU (12000)
CP392V-2N3904	40V	200mA	200mV	100	11.024 X 11.024	7.09	AL (30000)	AU (12000)
CP792V-CMPT3906	40V	200mA	250mV	100	11.024 X 11.024	7.09	AL (30000)	AU (18000)
CP792V-2N3251	40V	200mA	250mV	100	11.024 X 11.024	7.09	AL (30000)	AU (18000)
CP792V-2N3906	40V	200mA	250mV	100	11.024 X 11.024	7.09	AL (30000)	AU (18000)
CP191V-2N4401	40V	600mA	400mV	100	16.535 X 16.535	7.09	AL (30000)	AU-AS (9000)
CP191V-2N4401	40V	600mA	400mV	100	16.535 X 16.535	7.09	AL (30000)	AU-AS (13000)
CP225-2N2218A	40V	800mA	300mV	40	19.7 X 19.7	10	AL (30000)	AU (12000)
CP191V-2N2219A	40V	800mA	300mV	100	16.535 X 16.535	7.09	AL (30000)	AU-AS (13000)
CP191V-2N2219A	40V	800mA	300mV	100	16.535 X 16.535	7.09	AL (30000)	AU-AS (9000)
CP191V-2N2222A	40V	800mA	300mV	100	16.535 X 16.535	7.09	AL (30000)	AU-AS (13000)
CP191V-2N2222A	40V	800mA	300mV	100	16.535 X 16.535	7.09	AL (30000)	AU-AS (9000)
CP767V-2N3467	40V	1A	500mV	40	29.92 X 29.92	7.09	AL (30000)	AU (9000)
CP314V-MPS650	40V	2A	300mV	75	40.16 X 40.16	7.09	AL (30000)	AU (9000)
CP714V-MPS750	40V	2A	300mV	75	40.16 X 40.16	7.1	AL (30000)	AU (9000)
CP588-2N2605	45V	30mA	500mV	100	14.57 X 14.57	9	AL (30000)	AU (18000)
CP788X-2N2605	45V	30mA	500mV	100	13.7 X 13.7	5.9	AL-SI (17000)	AU (9000)
CP388X-BC847B	45V	100mA	250mV	200	12.99 X 12.99	5.9	AL-SI (17000)	AU (9000)
CP788X-BCX71K	45V	100mA	250mV	380	13.7 X 13.7	5.9	AL-SI (17000)	AU (9000)
CP388X-BC847C	45V	100mA	250mV	420	12.99 X 12.99	5.9	AL-SI (17000)	AU (9000)
CP188-BCY59-VIII	45V	100mA	350mV	180	14.568 X 14.568	9	AL (30000)	AU-AS (18000)
CP388X-BCY59-IX	45V	100mA	350mV	250	12.99 X 12.99	5.9	AL-SI (17000)	AU (9000)
CP388X-BCX70K	45V	100mA	350mV	380	12.99 X 12.99	5.9	AL-SI (17000)	AU (9000)
CP388X-MPSA18	45V	200mA	200mV	500	12.99 X 12.99	5.9	AL-SI (17000)	AU (9000)
CP188-BC107A	45V	200mA	250mV	110	14.568 X 14.568	9	AL (30000)	AU-AS (18000)

General Purpose Transistors



Indicates sorted columns
* Consult datasheet on web

Central Part Number	V _{CEO} MIN	I _C MIN	V _{CE(SAT)}	h _{FE} MIN	Die Size (MILS)	Die Thickness (MILS)	Top Metallization (Å)	Bottom Metallization (Å)
CP305-BC817	45V	500mA	700mV	100	31.1 X 31.1	9	AL (30000)	AU (18000)
CP305-BC817-40	45V	500mA	700mV	250	31.1 X 31.1	9	AL (30000)	AU (18000)
CP305-BCW66H	45V	800mA	300mV	250	31.1 X 31.1	9	AL (30000)	AU (18000)
CP305V-BCW66H	45V	800mA	300mV	250	31.1 X 31.1	7.1	AL (13000)	AU-AS (9000)
CP705V-BCW68H	45V	800mA	300mV	250	31.1 X 31.1	7.1	AL (13000)	AU (9000)
CP312-BD437	45V	4A	600mV	30	70.87 X 70.87	9	AL (30000)	TI/NI/AG (1000/500/11300)
CP788X-BCW70	50V	50mA	300mV	250	13.7 X 13.7	5.9	AL-SI (17000)	AU (9000)
CP788X-2N5087	50V	50mA	300mV	250	13.7 X 13.7	5.9	AL-SI (17000)	AU (9000)
CP337V-2N4014	50V	500mA	260mV	60	29.134 X 29.134	7.09	AL (30000)	AU-AS (13000)
CP188-BC549	50V	500mA	300mV	180	14.568 X 14.568	9	AL (30000)	AU-AS (18000)
CP337V-2N3725	50V	1.2A	260mV	60	29.134 X 29.134	7.09	AL (30000)	AU-AS (13000)
CP337V-2N3725A	50V	1.2A	260mV	60	29.134 X 29.134	7.09	AL (30000)	AU-AS (13000)
CP208-BD241	55V	4A	1V	25	66 X 66	12.5	AL (50000)	CR/NI/AG (1000/6000/10000)
CP211-2N3054A	55V	4A	1V	25	99.04 X 80.01	12.5	AL (30000)	CR/NI/AG (1000/5000/10000)
CP188-2N2919	60V	30mA	350mV	60	14.568 X 14.568	9	AL (30000)	AU-AS (18000)
CP388X-2N2920	60V	30mA	350mV	150	12.99 X 12.99	5.9	AL-SI (17000)	AU (9000)
CP588-2N3806	60V	50mA	200mV	150	14.57 X 14.57	9	AL (30000)	AU (18000)
CP788X-2N3799	60V	50mA	200mV	300	13.7 X 13.7	5.9	AL-SI (17000)	AU (9000)
CP788X-2N3811	60V	50mA	200mV	300	13.7 X 13.7	5.9	AL-SI (17000)	AU (9000)
CP388X-2N2484	60V	50mA	350mV	100	12.99 X 12.99	5.9	AL-SI (17000)	AU (9000)
CP591X-2N2905A	60V	600mA	400mV	100	19.29 X 19.29	5.9	AL (13000)	AU (9000)
CP591X-2N2907A	60V	600mA	400mV	100	19.29 X 19.29	5.9	AL (13000)	AU (9000)
CP208-2N4911	60V	1A	600mV	20	66 X 66	12.5	AL (50000)	CR/NI/AG (1000/6000/10000)
CP314V-MPS651	60V	2A	300mV	75	40.16 X 40.16	7.09	AL (30000)	AU (9000)
CP325V-MJE181	60V	3A	900mV	50	40.16 X 40.16	7.09	AL (30000)	AU-AS (9000)
CP208-2N3766	60V	4A	1V	40	66 X 66	12.5	AL (50000)	CR/NI/AG (1000/6000/10000)
CP208-2N5191	60V	4A	600mV	25	66 X 66	12.5	AL (50000)	CR/NI/AG (1000/6000/10000)
CP312-BFX34	60V	5A	1V	40	70.87 X 70.87	9	AL (30000)	TI/NI/AG (1000/500/11300)
CP312-2N5154MOD	60V	5A	1V	40	70.87 X 70.87	9	AL (30000)	TI/NI/AG (1000/500/11300)
CP611-2N5955	60V	6A	1V	20	99 X 80	12.5	AL (50000)	CR/NI/AG (1000/5000/10000)
CP635-2N3791	60V	10A	1V	50	106 X 106	12	AL (50000)	AG (10000)
CP235-2N3715	60V	10A	800mV	50	106 X 106	12	AL (50000)	AG (10000)
CP235-2N3055	60V	15A	1.1V	20	106 X 106	12	AL (50000)	AG (10000)
CP635-MJ2955	60V	15A	1.1V	20	106 X 106	12	AL (50000)	AG (10000)
CP312-CZT3120	70V	3A	500mV	100	70.87 X 70.87	9	AL (30000)	TI/NI/AG (1000/500/11300)
CP611-2N6107	70V	7A	3.5V	30	99 X 80	12.5	AL (50000)	CR/NI/AG (1000/5000/10000)
CP305-D40D11	75V	1A	1V	120	31.1 X 31.1	9	AL (30000)	AU (18000)
CP705V-D41D11	75V	1A	1V	120	31.1 X 31.1	7.1	AL (13000)	AU (9000)
CP325V-2N5320	75V	2A	500mV	30	40.16 X 40.16	7.09	AL (30000)	AU-AS (9000)
CP714V-2N5322	75V	2A	700mV	30	40.16 X 40.16	7.1	AL (30000)	AU (9000)
CP304V-CMPTA06	80V	500mA	250mV	100	22.05 X 22.05	7.1	AL (30000)	AU (18000)
CP304V-MPSA06	80V	500mA	250mV	100	22.05 X 22.05	7.1	AL (30000)	AU (18000)
CP304X-MPSA06	80V	500mA	250mV	100	22.05 X 22.05	5.9	AL (30000)	AU-AS (9000)
CP720-MPSA56	80V	500mA	250mV	100	22.047 X 22.047	9	AL (30000)	AU (18000)

General Purpose Transistors



S Indicates sorted columns
* Consult datasheet on web

Central Part Number	S V _{CEO} MIN	I _C MIN	V _{CE(SAT)}	h _{FE} MIN	Die Size (MILS)	Die Thickness (MILS)	Top Metallization (Å)	Bottom Metallization (Å)
CP303X-CMPT8099	80V	500mA	400mV	100	22.05 X 22.05	5.9	AL (30000)	AU-AS (9000)
CP705V-CZT4033	80V	1A	150mV	100	31.1 X 31.1	7.1	AL (13000)	AU (9000)
CP305-2N3020	80V	1A	200mV	30	31.1 X 31.1	9	AL (30000)	AU (18000)
CP305-2N3701	80V	1A	200mV	30	31.1 X 31.1	9	AL (30000)	AU (18000)
CP305-BCX20	80V	1A	200mV	100	31.1 X 31.1	9	AL (30000)	AU (18000)
CP305-BC327C	80V	1A	200mV	100	31.1 X 31.1	9	AL (30000)	AU (18000)
CP305-2N3019	80V	1A	200mV	100	31.1 X 31.1	9	AL (30000)	AU (18000)
CP305-2N3700	80V	1A	200mV	100	31.1 X 31.1	9	AL (30000)	AU (18000)
CP325V-2N5150	80V	2A	460mV	70	40.16 X 40.16	7.09	AL (30000)	AU-AS (9000)
CP714V-2N5149	80V	2A	460mV	70	40.16 X 40.16	7.1	AL (30000)	AU (9000)
CP312-2N4239	80V	3A	300mV	30	70.87 X 70.87	9	AL (30000)	TI/NI/AG (1000/500/11300)
CP208-MJE182	80V	3A	900mV	50	66 X 66	12.5	AL (50000)	CR/NI/AG (1000/6000/10000)
CP325V-MJE182	80V	3A	900mV	50	40.16 X 40.16	7.09	AL (30000)	AU-AS (9000)
CP714V-MJE172	80V	3A	900mV	50	40.16 X 40.16	7.1	AL (30000)	AU (9000)
CP208-2N3767	80V	4A	1V	40	66 X 66	12.5	AL (50000)	CR/NI/AG (1000/6000/10000)
CP608-2N3741	80V	4A	600mV	30	66 X 66	12.5	AL (50000)	CR/NI/AG (1000/6000/10000)
CP348-2N5154	80V	5A	750mV	70	82.677 X 82.677	9.06	AL-SI (40000)	TI/NI/AG (2000/3000/20000)
CP220-CJD44H11	80V	8A	1V	60	100.5 X 100.5	12.5	AL (50000)	AG (10000)
CP620-CJD45H11	80V	8A	1V	60	100.5 X 100.5	12.5	AL (50000)	AG (10000)
CP235-2N3716	80V	10A	800mV	50	106 X 106	12	AL (50000)	AG (10000)
CP788X-2N3799A	90V	50mA	200mV	300	13.7 X 13.7	5.9	AL-SI (17000)	AU (9000)
CP305-2N3499	100V	500mA	250mV	100	31.1 X 31.1	9	AL (30000)	AU (18000)
CP208-TIP31C	100V	3A	1.2V	10	66 X 66	12.5	AL (50000)	CR/NI/AG (1000/6000/10000)
CP608-TIP32C	100V	3A	1.2V	10	66 X 66	12.5	AL (50000)	CR/NI/AG (1000/6000/10000)
CP608-2N6475	100V	4A	1.2V	15	66 X 66	12.5	AL (50000)	CR/NI/AG (1000/6000/10000)
CP211-TIP41C	100V	6A	1.5V	15	99.04 X 80.01	12.5	AL (30000)	CR/NI/AG (1000/5000/10000)
CP611-TIP42C	100V	6A	1.5V	15	99 X 80	12.5	AL (50000)	CR/NI/AG (1000/5000/10000)
CP318V-2N5682	120V	1A	1V	40	25.984 X 25.984	7.09	AL-SI (17000)	AU (9000)
CP595-2N5680	120V	1A	1V	40	30 X 30	7	AL (30000)	AU (10000)
CP608-2N6468	120V	4A	1.2V	15	66 X 66	12.5	AL (50000)	CR/NI/AG (1000/6000/10000)
CP736V-2N3635	140V	1A	300mV	100	17.323 X 17.323	7.1	AL-SI (17000)	AU (9000)
CP310-2N3114	150V	200mA	1V	30	25.98 X 25.98	9.06	AL (30000)	AU (9000)
CP318V-2N3501	150V	300mA	250mV	100	25.984 X 25.984	7.09	AL-SI (17000)	AU (9000)
CP736V-CMPT5401	150V	600mA	200mV	60	17.323 X 17.323	7.1	AL-SI (17000)	AU (9000)
CP736V-2N5401	150V	600mA	200mV	60	17.323 X 17.323	7.1	AL-SI (17000)	AU (9000)
CP336V-2N5551	160V	600mA	150mV	80	17.323 X 17.323	7.1	AL-SI (17000)	AU (9000)
CP348-BUY48	170V	7A	450mV	40	82.677 X 82.677	9.06	AL-SI (40000)	TI/NI/AG (2000/3000/20000)
CP710V-2N5415	200V	1A	2.5V	30	25.98 X 25.98	7.09	AL (30000)	AU (9000)
CP349-BUY49S	200V	3A	200mV	40	51.181 X 51.181	9.06	AL (30000)	TI/NI/AG (2000/3000/20000)
CP212-TIP47	250V	1A	1V	30	99.05 X 80.01	12.5	AL (30000)	CR/NI/AG (1000/5000/10000)
CP310-2N3440	250V	1A	500mV	40	25.98 X 25.98	9.06	AL (30000)	AU (9000)
CP310-2N6431	300V	100mA	500mV	50	25.98 X 25.98	9.06	AL (30000)	AU (9000)
CP310-CJD340	300V	500mA	1V	30	25.98 X 25.98	9.06	AL (30000)	AU (9000)
CP710V-CJD350	300V	500mA	2.6V	30	25.98 X 25.98	7.09	AL (30000)	AU (9000)

General Purpose Transistors



S Indicates sorted columns
* Consult datasheet on web

Central Part Number	S V _{CEO} MIN	I _C MIN	V _{CE(SAT)}	h _{FE} MIN	Die Size (MILS)	Die Thickness (MILS)	Top Metallization (Å)	Bottom Metallization (Å)
CP310-CMPTA42	300V	500mA	500mV	25	25.98 X 25.98	9.06	AL (30000)	AU (9000)
CP310-MPSA42	300V	500mA	500mV	25	25.98 X 25.98	9.06	AL (30000)	AU (9000)
CP310V-CMPTA42	300V	500mA	500mV	25	25.98 X 25.98	7.09	AL (30000)	AU (18000)
CP710V-MPSA92	300V	500mA	800mV	25	25.98 X 25.98	7.09	AL (30000)	AU (9000)
CP310-MJE340	300V	500mA	N/A*	30	25.98 X 25.98	9.06	AL (30000)	AU (9000)
CP710V-2N5416	300V	1A	2V	30	25.98 X 25.98	7.09	AL (30000)	AU (9000)
CP212-2N3585	300V	2A	0.75V	8	99.05 X 80.01	12.5	AL (30000)	CR/NI/AG (1000/5000/10000)
CP212-2N4240	300V	2A	1V	10	99.05 X 80.01	12.5	AL (30000)	CR/NI/AG (1000/5000/10000)
CP310-MJE3439	350V	300mA	500mV	50	25.98 X 25.98	9.06	AL (30000)	AU (9000)
CP310-2N6517	350V	500mA	350mV	30	25.98 X 25.98	9.06	AL (30000)	AU (9000)
CP710V-2N6520	350V	500mA	350mV	30	25.98 X 25.98	7.09	AL (30000)	AU (9000)
CP310-2N3439	350V	1A	500mV	40	25.98 X 25.98	9.06	AL (30000)	AU (9000)
CP310-CMPTA44	400V	300mA	500mV	50	25.98 X 25.98	9.06	AL (30000)	AU (9000)
CP310-MPSA43	400V	300mA	500mV	50	25.98 X 25.98	9.06	AL (30000)	AU (9000)
CP710V-CMPTA94	400V	300mA	500mV	50	25.98 X 25.98	7.09	AL (30000)	AU (9000)
CP710V-CZTA94	400V	300mA	500mV	50	25.98 X 25.98	7.09	AL (30000)	AU (9000)
CP212-TIP50	400V	1A	1V	30	99.05 X 80.01	12.5	AL (30000)	CR/NI/AG (1000/5000/10000)
CP212-CZTA44HC	400V	2A	500mV	35	99.05 X 80.01	12.5	AL (30000)	CR/NI/AG (1000/5000/10000)
CP285-MJE13005	400V	4A	600mV	10	105.51 X 105.51	9.45	AL (45000)	TI/NI/AG (3000/10000/10000)
CP289-MJE13009	400V	12A	1.5V	8	167.32 X 167.32	9.45	AL (45000)	TI/NI/AG (3000/10000/10000)
CP310-CMPTA46	450V	500mA	300mV	50	25.98 X 25.98	9.06	AL (30000)	AU (9000)
CP710-CMPTA96	450V	500mA	300mV	50	25.98 X 25.98	9.06	AL (30000)	AU (18000)
CP710V-CMPTA96	450V	500mA	300mV	50	25.98 X 25.98	7.09	AL (30000)	AU (9000)
CP250-CZTUX87	450V	500mA	800mV	12	99.285 X 68.853	11.6	AL-SI (60000)	TI/NI/AG (3000/2000/500)
CP101-BSS52	N/A*	1A	150mA	N/A*	27.5 X 27.5	8	AL (30000)	AU (12000)

RF Oscillator Transistors



NPN

Central Part Number	S V _{CEO} MIN	I _C MIN	V _{CE(SAT)}	h _{FE} MIN	Die Size (MILS)	Die Thickness (MILS)	Top Metallization (Å)	Bottom Metallization (Å)
CP229-2N5109	20V	400mA	500mV	40	21.651 X 21.651	8.66	AL (10000)	AU (10000)
CP243-CM5943	30V	400mA	200mV	25	21.65 X 21.65	9.5	AL (10000)	AU (12000)
CP223-2N3866	30V	400mA	1V	10	21.7 X 21.7	9	AL (30000)	AU (12000)

PNP

Central Part Number	S V _{CEO} MIN	I _C MIN	V _{CE(SAT)}	h _{FE} MIN	Die Size (MILS)	Die Thickness (MILS)	Top Metallization (Å)	Bottom Metallization (Å)
CP681-CMPH81	20V	50mA	500mV	60	15 X 15	7.9	AL-SI (13000)	AU (12000)
CP617-CM4957	25V	30mA	N/A*	20	15.7 X 15.7	7.9	AL (9000)	AU (10000)
CP618-CM5583	30V	500mA	800mV	25	21.7 X 21.7	9	AL (10000)	AU (10000)
CP616-CM5160	40V	400mA	N/A*	10	21.7 X 21.7	9	AL (30000)	AU (10000)

Darlington Transistors



S Indicates sorted columns
* Consult datasheet on web

Central Part Number	S V _{CEO} MAX	I _{CC} MAX	V _{CE(SAT)}	h _{FE} MIN	Die Size (MILS)	Die Thickness (MILS)	Top Metallization (Å)	Bottom Metallization (Å)
CP307V-2N5308	40V	300mA	1.4V	7000	27.17 X 27.17	7.09	AL (30000)	AU (18000)
CP127-2N6294	60V	4A	2V	750	110 X 110	10.6	AL (20000)	NI/AG (2000/10000)
CP527-2N6296	60V	4A	2V	750	110 X 110	10.6	AL (20000)	NI/AG (2000/10000)
CP127-2N6300	60V	8A	2V	750	110 X 110	10.6	AL (20000)	NI/AG (2000/10000)
CP527-2N6053	60V	8A	2V	750	110 X 110	10.6	AL (20000)	NI/AG (2000/10000)
CP230-2N6039	80V	4A	2V	750	80 X 80	8	AL (30000)	TI/PD/AG (2500/5500/12000)
CP630-2N6036	80V	4A	2V	750	80 X 80	8	AL (30000)	TI/PD/AG (2500/5500/12000)
CP127-2N6301	80V	8A	2V	750	110 X 110	10.6	AL (20000)	NI/AG (2000/10000)
CP527-2N6299	80V	8A	2V	750	110 X 110	10.6	AL (20000)	NI/AG (2000/10000)
CP127-2N6385	80V	10A	2V	1000	110 X 110	10.6	AL (20000)	NI/AG (2000/10000)
CP127-2N6388	80V	10A	2V	1000	110 X 110	10.6	AL (20000)	NI/AG (2000/10000)
CP527-2N6668	80V	10A	2V	1000	110 X 110	10.6	AL (20000)	NI/AG (2000/10000)
CP147-MJ11014	90V	30A	3V	1000	195 X 195	11.4	AL (60000)	TI/NI/AU (1100/4000/500)
CP647-MJ11013	90V	30A	3V	1000	211 X 211	12.5	AL (50000)	TI/NI/AG (1000/6000/10000)
CP230-CZT122	100V	5A	2V	1000	80 X 80	8	AL (30000)	TI/PD/AG (2500/5500/12000)
CP230-TIP122	100V	5A	2V	1000	80 X 80	8	AL (30000)	TI/PD/AG (2500/5500/12000)
CP630-CZT127	100V	5A	2V	1000	80 X 80	8	AL (30000)	TI/PD/AG (2500/5500/12000)
CP630-TIP127	100V	5A	2V	1000	80 X 80	8	AL (30000)	TI/PD/AG (2500/5500/12000)
CP127-2N6045	100V	8A	2V	1000	110 X 110	10.6	AL (20000)	NI/AG (2000/10000)
CP527-2N6042	100V	8A	2V	1000	110 X 110	10.6	AL (20000)	NI/AG (2000/10000)
CP127-TIP142	100V	10A	2V	1000	110 X 110	10.6	AL (20000)	NI/AG (2000/10000)
CP527-TIP147	100V	10A	2V	1000	110 X 110	10.6	AL (20000)	NI/AG (2000/10000)
CP647-2N6287	100V	20A	2V	750	211 X 211	12.5	AL (50000)	TI/NI/AG (1000/6000/10000)
CP647-PMD19K100	100V	30A	2V	800	211 X 211	12.5	AL (50000)	TI/NI/AG (1000/6000/10000)
CP147-MJ11016	120V	30A	3V	1000	195 X 195	11.4	AL (60000)	TI/NI/AU (1100/4000/500)
CP247-MJ11016	120V	30A	3V	1000	211 X 211	12.5	AL (50000)	TI/NI/AG (1000/6000/10000)
CP647-MJ11015	120V	30A	3V	1000	211 X 211	12.5	AL (50000)	TI/NI/AG (1000/6000/10000)
CP727V-CMPTA64	N/A*	500mA	1.5V	10000	22.835 X 22.835	7.1	AL-SI (17000)	AU (9000)
CP727V-CZTA77	N/A*	500mA	1.5V	10000	22.835 X 22.835	7.1	AL-SI (17000)	AU (9000)
CP727V-MPSA64	N/A*	500mA	1.5V	10000	22.835 X 22.835	7.1	AL-SI (17000)	AU (9000)
CP727V-MPSU95	N/A*	500mA	1.5V	50000	22.835 X 22.835	7.1	AL-SI (17000)	AU (9000)
CP331-CZT2000	N/A*	600mA	1.1V	3000	39.37 X 39.37	9.1	AL-SI (30000)	AU-AS (18000)
CP101-BSS52	N/A*	1A	1.3V	1000	27.5 X 27.5	8	AL (30000)	AU (12000)

Low VCE(SAT) Transistors



Central Part Number	S V _{CEO} MAX	I _C MAX	V _{CE(SAT)} MAX	h _{FE} MAX	Die Size (MILS)	Die Thickness (MILS)	Top Metallization (Å)	Bottom Metallization (Å)
CP341V-CMPT3410	25V	1A	75mV	300	17.714 X 17.714	7.09	AL-SI (30000)	AU (9000)
CP382X-CMPT3820	60V	1A	150mV	N/A*	26 X 26	5.9	AL (30000)	AU (9000)
CP753V-CZT953	100V	5A	120mV	300	65.748 X 65.748	7.09	AL-SI (30000)	TI/NI/AG (2000/3000/20000)
CP353V-CZT853	100V	6A	170mV	300	65.748 X 65.748	7.09	AL-SI (30000)	TI/NI/AG (2000/3000/20000)
CP763V-CZT955	140V	4A	80mV	300	48.8 X 48.8	7.09	AL (30000)	TI/NI/AG (2000/3000/20000)

MOSFETs



S Indicates sorted columns
* Consult datasheet on web

Central Part Number	S V _{DS} MAX	I _D MAX	r _{DS(ON)} MAX	Q _g TYP	Die Size (MILS)	Die Thickness (MILS)	Top Metallization (Å)	Bottom Metallization (Å)
CP361X-CEDM7001	20V	100mA	3Ω	0.566nc	14.173 X 14.173	5.5	AL-SI (35000)	AU (9000)
CP757X-CMLDM5757	20V	430mA	900mΩ	1.2nc	22 X 17	5.5	AL-SI (35000)	AU (9000)
CP357X-CMLDM3737	20V	540mA	550mΩ	1.58nc	22 X 17	5.5	AL-SI (35000)	AU (9000)
CP726X-CMLDM8120	20V	860mA	150mΩ	3.56nc	27.559 X 31.496	5.5	AL-SI (35000)	AU (9000)
CP794R-CEDM8004	30V	450mA	1.1Ω	0.88nc	15.7 X 15.7	3.9	AL-SI (35000)	AU (9000)
CP394R-CEDM7004	30V	1.78A	460mΩ	0.792nc	15.7 X 15.7	3.9	AL-SI (35000)	AU (9000)
CP773-CMPDM302PH	30V	2.4A	0.091Ω	7nc	27 X 39	7.5	AL (40000)	TI/NI/AG (1000/3000/10000)
CP373-CTLDM303N	30V	3.6A	40mΩ	5nc	27 X 39	7.5	AL (40000)	TI/NI/AG (1000/3000/10000)
CP373-CMPDM303NH	30V	3.6A	0.04Ω	5nc	27 X 39	7.5	AL (40000)	TI/NI/AG (1000/3000/10000)
CP776-CWDM305P	30V	5.3A	72mΩ	4.7nc	33 X 24	7	AL (40000)	TI/NI/AG (1000/3000/10000)
CP376X-CWDM305N	30V	5.8A	30mΩ	4.2nc	39 X 27	5.5	AL (40000)	TI/NI/AG (1000/3000/10000)
CP375-CWDM3011N	30V	11A	20mΩ	6.3nc	62 X 38	7.5	AL (40000)	TI/NI/AG (1000/3000/10000)
CP775-CWDM3011P	30V	11A	20mΩ	80nc	90 X 60	5.5	AL (40000)	TI/NI/AG (1000/3000/10000)
CP771-CXDM4060P	40V	6A	65mΩ	6.5nc	32 X 55	7.5	AL (40000)	TI/NI/AG (1000/3000/10000)
CP354X-2N7003	50V	280mA	2.3Ω	0.764nc	21.651 X 21.651	5.5	AL-SI (37000)	AU (12000)
CP354X-2N7003	50V	280mA	2.3Ω	0.764nc	21.651 X 21.651	5.5	AL-SI (37000)	AU (9000)
CP354X-2N7003T	50V	280mA	2.3Ω	0.764nc	21.651 X 21.651	5.5	AL-SI (37000)	AU (12000)
CP354X-2N7003T	50V	280mA	2.3Ω	0.764nc	21.651 X 21.651	5.5	AL-SI (37000)	AU (9000)
CP764X-CMLDM8002	50V	280mA	2.5Ω	0.72nc	21.654 X 17.717	5.5	AL-SI (35000)	AU (9000)
CP764X-CMPDM8002	50V	280mA	2.5Ω	0.72nc	21.654 X 17.717	5.5	AL-SI (35000)	AU (9000)
CP324X-2N7002	60V	115mA	7.5Ω	0.592nc	21.65 X 21.65	5.9	AL-SI (30000)	AU (12000)
CP324X-2N7002A	60V	280mA	2Ω	0.592nc	21.65 X 21.65	5.9	AL-SI (30000)	AU (12000)
CP324X-7002A	60V	280mA	2Ω	0.592nc	21.65 X 21.65	5.9	AL-SI (30000)	AU (12000)
CP390-CDM4-600LR	600V	4A	0.95Ω	11.59nc	117 X 87.4	9.06	AL (43000)	AG (8000)

JFETs



Central Part Number	S B _{VGS} MIN	I _{GC} MAX	V _{GS(OFF)} MIN	V _{GS(OFF)} MAX	Die Size (MILS)	Die Thickness (MILS)	Top Metallization (Å)	Bottom Metallization (Å)
CP210-2N4416	30V	10mA	N/A*	6V	15 X 15	8	AL (30000)	AU (6000)
CP210-2N4416A	35V	10mA	2.5V	6V	15 X 15	8	AL (30000)	AU (6000)
CP206-2N4393	40V	50mA	0.5V	3V	21 X 17.997	8	AL (30000)	AU (6000)
CP206-2N4392	40V	50mA	2V	5V	21 X 17.997	8	AL (30000)	AU (6000)
CP206-2N4856	40V	50mA	4V	10V	21 X 17.997	8	AL (30000)	AU (6000)

ESD Diodes & Arrays



Indicates sorted columns
 * C_J TYP values indicated for this device
 ** Available only in -WN and -WR packing methods

Central Part Number	V _{RWM} MAX	ESD Voltage	C _J MAX	V _C MAX	Die Size (MILS)	Die Thickness (MILS)	Top Metallization (Å)	Bottom Metallization (Å)
CPZ35R-CMATVS3V3**	3.3V	30KV	45*	11V	10.2 X 10.2	3.9	AL (30000)	AU (9000)
CPZ35R-CMATVS3V3**	3.3V	30KV	45*	11V	10.2 X 10.2	3.9	AL (30000)	AU (12000)
CPZ34R-CTLTVS6V2**	4V	15KV	25*	10.7V	6.7 X 6.7	3.54	AL (30000)	AU (12000)
CPZ40R-CMO5V0LC**	5V	15KV	0.9	12V	13.4 X 13.4	3.9	AL (30000)	AU (9000)
CPZ40X-CMO5V0LC**	5V	15KV	0.9	12V	13.4 X 13.4	5.5	AL (30000)	AU (9000)
CPZ41X-CMKTVS5-4**	5V	15KV	3	14V	31.9 X 18.9	5.9	AL-SI (30000)	AU (15000)
CPZ39R-CMNTVS5V0**	5V	15KV	10	12.5V	11 X 11	3.94	AL (30000)	AU (9000)
CPZ36R-CMATVS5V0**	5V	30KV	40*	12.3V	10.2 X 10.2	3.9	AL (30000)	AU (12000)
CPZ33R-CMNTVS12V**	9V	8KV	10	18V	14.2 X 14.2	3.9	AL (13000)	AU (12000)
CPZ37R-CTLTVS12**	9V	30KV	14*	18V	6.7 X 6.7	3.54	AL (13000)	AU/AS-AG (13000/6000)

Programmable UJT Thyristors



S Indicates sorted columns
* Consult datasheet on web

Central Part Number	S V _{GKF} MAX	I _T MAX	I _P MAX	V _T MAX	Die Size (MILS)	Die Thickness (MILS)	Top Metallization (Å)	Bottom Metallization (Å)
CP624-2N6028	40V	150mA	0.15uA	0.6V	27.56 X 27.56	9.45	AL (20000)	AU (13000)
CP622-2N6027	40V	150mA	2uA	1.6V	27.56 X 27.56	9.45	AL (20000)	AU (13000)

SCR Thyristors

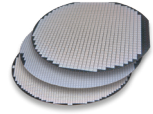


Central Part Number	S V _{DRM} MAX	I _{T(RMS)} MAX	I _{GT} MAX	V _{GT} MAX	Die Size (MILS)	Die Thickness (MILS)	Top Metallization (Å)	Bottom Metallization (Å)
CPS053-2N5060	30V	0.8A	200uA	0.8V	53.15 X 53.15	8.66	AL (45000)	AL/MO/NI/AG (20000/5000/5000/2000)
CPS053-2N2323	50V	1.6A	200uA	0.8V	53.15 X 53.15	8.66	AL (45000)	AL/MO/NI/AG (20000/5000/5000/2000)
CPS053-2N5064	200V	0.8A	200uA	0.8V	53.15 X 53.15	8.66	AL (45000)	AL/MO/NI/AG (20000/5000/5000/2000)
CPS053-CS18B	200V	1A	200uA	0.8V	53.15 X 53.15	8.66	AL (45000)	AL/MO/NI/AG (20000/5000/5000/2000)

Triac Thyristors



Central Part Number	S V _{DRM} MAX	I _{T(RMS)} MAX	I _{GT} MAX	I _H MAX	Die Size (MILS)	Die Thickness (MILS)	Top Metallization (Å)	Bottom Metallization (Å)
CPQ114-CQD-8M3	600V	8A	50mA	50mA	114 X 114	8.3	AL (45000)	AL/TI/NI/AG (20000/2600/4000/10000)
CPQ128-CQDD-12M3	600V	12A	50mA	50mA	128 X 128	8.3	AL (20000)	AL/TI/NI/AG (20000/2600/4000/10000)



Gross die per wafer

Sorted by process type

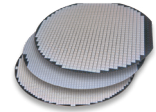
Process	Wafer Size (inches)	Gross Die Per Wafer
CPD04	4	18,000
CPD06	4	1,490
CPD07	4	1,170
CPD08	6	3,490
CPD102X	5	210,600
CPD104R	5	80,698
CPD107	5	5,516
CPD112R	5	74,508
CPD16	4	4,250
CPD17	4	1,200
CPD18	4	1,056
CPD19	4	1,335
CPD20	4	1,725
CPD21	4	700
CPD22	4	4,064
CPD24	4	4,250
CPD26	4	1,000
CPD30V	4	46,200
CPD40	5	3,717
CPD48V	4	59,940
CPD48V	5	89,720
CPD48V	5	90,246
CPD65	4	75,000
CPD66X	5	54,848
CPD69	4	5,915
CPD76X	4	10,915
CPD76X	5	16,276
CPD77X	4	3,009
CPD77X	5	4,616
CPD79	4	4,608
CPD79	5	6,966
CPD80V	4	42,040
CPD80V	5	64,704
CPD80V	5	65,400
CPD81R	5	3,137
CPD81X	5	3,137
CPD82X	4	52,965

Process	Wafer Size (inches)	Gross Die Per Wafer
CPD82X	5	80,698
CPD83V	4	89,376
CPD83V	5	137,880
CPD85V	4	7,299
CPD85V	5	10,900
CPD87R	5	80,698
CPD89V	5	103,344
CPD91V	4	89,376
CPD91V	5	137,880
CPD93V	4	63,904
CPD94X	4	28,028
CPD94X	5	41,921
CPD98V	4	93,826
CPD98V	5	141,234
CPQ114	4	787
CPQ128	4	623
CPS053	4	3,884
CPZ18	4	61,141
CPZ19	4	36,642
CPZ25	4	10,370
CPZ25	5	14,796
CPZ28X	5	101,184
CPZ33R	5	84,926
CPZ34R	5	374,272
CPZ35R	5	163,034
CPZ36R	5	163,034
CPZ37R	5	368,512
CPZ39R	5	140,490
CPZ40R	6	122,493
CPZ40X	6	122,493
CPZ41X	5	25,204
CP101	4	14,200
CP127	4	875
CP147	5	400
CP188	4	54,599
CP191V	4	41,699
CP191V	5	62,510

Process	Wafer Size (inches)	Gross Die Per Wafer
CP206	4	30,000
CP206	5	45,000
CP208	4	2,645
CP210	4	53,730
CP210	5	72,000
CP211	4	1,450
CP212	4	1,380
CP219	4	1,570
CP220	4	1,075
CP223	4	16,000
CP223	4	23,990
CP225	4	26,000
CP229	4	21,000
CP230	4	1,650
CP235	4	920
CP243	4	17,500
CP247	4	246
CP250	5	2,500
CP250	6	3,545
CP285	5	1,486
CP289	5	558
CP302	4	53,730
CP303X	4	23,455
CP303X	5	35,100
CP304V	4	23,048
CP304V	5	35,078
CP304X	5	35,078
CP305	4	11,212
CP305V	4	11,212
CP305V	5	17,534
CP306V	5	22,655
CP307V	4	15,165
CP310	4	17,130
CP310	5	25,214
CP310V	4	17,130
CP312	4	2,230
CP314V	4	6,936

Gross die per wafer

Sorted by process type



Process	Wafer Size (inches)	Gross Die Per Wafer
CP314V	5	10,583
CP315V	4	6,936
CP317X	5	81,751
CP318V	5	25,536
CP324X	5	33,142
CP324X	6	48,613
CP325V	4	6,936
CP325V	5	10,454
CP331	5	11,055
CP336V	5	57,735
CP337V	4	13,192
CP341V	5	54,330
CP348	5	2,449
CP349	5	6,487
CP353V	5	3,878
CP354X	6	51,098
CP357X	6	63,845
CP360	5	25,214
CP361X	6	123,000
CP373	8	43,500
CP375	8	18,670
CP375	8	18,700
CP376X	8	43,500
CP382X	5	25,536
CP383X	5	25,536
CP388X	5	102,852
CP390	6	2,154
CP392V	4	93,826
CP394R	6	95,400
CP396V	5	139,524
CP527	4	875
CP588	4	54,599
CP591X	5	45,900
CP595	3	7,200
CP595	4	12,500

Process	Wafer Size (inches)	Gross Die Per Wafer
CP608	4	2,645
CP611	4	1,450
CP616	4	24,790
CP617	4	44,140
CP618	4	23,990
CP620	4	1,075
CP622	3	8,894
CP624	3	8,894
CP630	4	1,445
CP631	4	24,000
CP635	4	920
CP647	4	230
CP705V	4	11,212
CP705V	5	17,534
CP710V	4	17,130
CP710V	5	25,214
CP714V	4	6,936
CP714V	5	10,560
CP720	4	22,400
CP723	4	54,599
CP726X	6	27,100
CP727V	5	33,085
CP736V	5	57,735
CP742X	4	35,340
CP753V	5	3,878
CP757X	6	63,845
CP760V	5	25,214
CP763V	5	7,100
CP764X	6	62,600
CP767V	4	12,548
CP767V	5	18,960
CP771	8	25,200
CP773	8	43,500
CP775	8	8,000
CP776	8	57,000

Process	Wafer Size (inches)	Gross Die Per Wafer
CP788X	5	91,469
CP792V	4	93,826
CP792V	5	141,272
CP794R	6	95,200

QUALITY POLICY

- ◆ Our definition of quality is **Complete Customer Satisfaction**.
- ◆ We are dedicated to manufacturing **Competitively Priced, Quality Products** delivered on time and professionally serviced.
- ◆ We define **Excellence** as surpassing our customers' expectations.
- ◆ Our perpetual challenge is the pursuit of **Achieving Excellence** in everything we do, and we strive to accomplish this by utilizing **Ongoing Training** for **Continuous Improvement** in all areas.
- ◆ We recognize that customer satisfaction results in **Repeat Business**.

Discretes do Matter™



Central™
Semiconductor Corp.

145 Adams Avenue
Hauppauge, New York 11788 USA
Tel: 631.435.1110

www.centrasemi.com